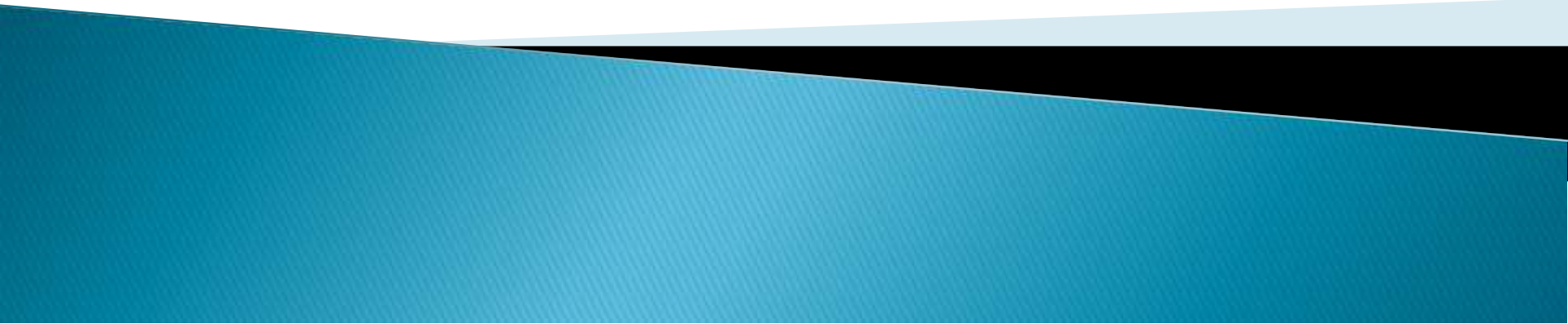


PSYCHOLOGY AND PERCEPTION

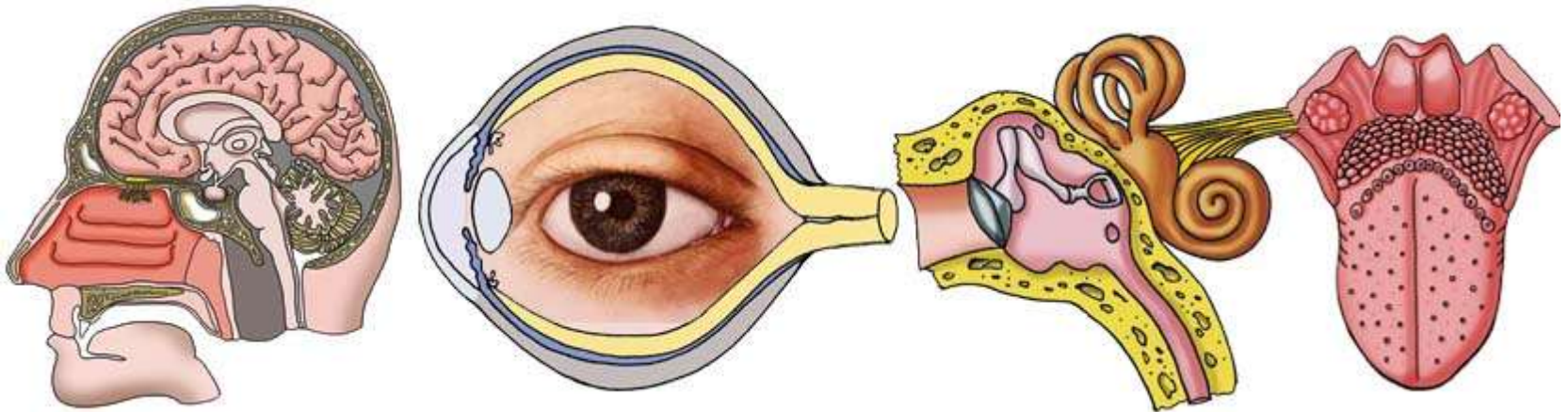


- ▶ The newborn baby is alert and aware of his surroundings when he is awake. Far from being impassive he reacts to stimuli at a very early age to a mass information about his environment.

– Brazelton 1984

Special senses

- ▶ Vision
- ▶ Hearing
- ▶ Smell and taste
- ▶ Touch



Sleeping and waking

- ▶ Sleep states
 - Deep sleep
 - Light sleep
- ▶ Wakeful states
 - Drowsy state
 - Quiet alert state
 - Active alert state
 - Active crying state
- ▶ Crying



Growth and development

